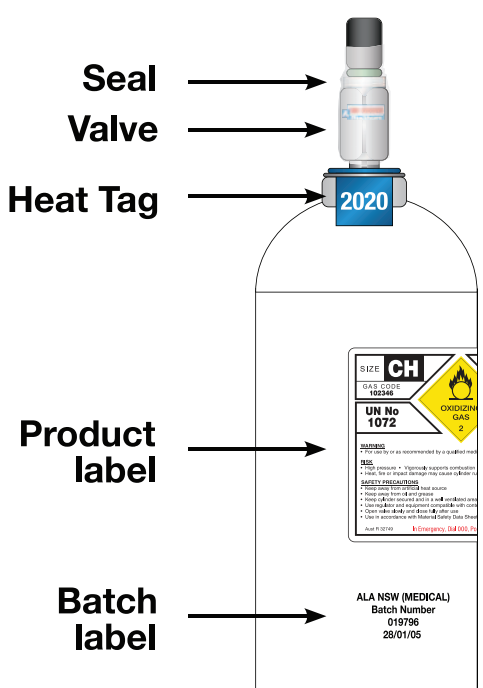


1 IDENTIFY THE CYLINDER

CHECK THE CYLINDER LABEL AND THE CYLINDER SHOULDER COLOUR



- ✓ Make sure the **PROTECTIVE TAMPER-EVIDENT SEAL** on the valve is intact.
- ✓ Check the **VALVE** is not leaking.
- ✓ Check that the **HEAT TAG** is present and not damaged or deformed.
- ✓ Always check the **PRODUCT LABEL** before using the cylinder.
- ✓ Check the **BATCH LABEL**. Never use a cylinder if the batch label is missing.
- ✓ Look for dents or damage on the **CYLINDER**.
- ✓ Always have the **SDS** on hand.

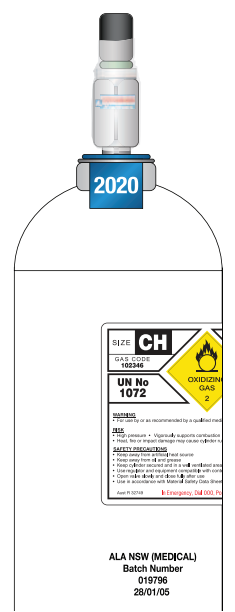


If you suspect there is something wrong with a cylinder

1. **DO NOT USE** this cylinder.
2. Put it in **QUARANTINE**.
3. Label it as **'SUSPECT'**.
4. **NOTIFY** Air Liquide Healthcare **IMMEDIATELY**.

2 DO YOU NEED A REGULATOR?

YES - go to step 3
PIN INDEX CYLINDER VALVE



NO - follow these steps
INTEGRATED CYLINDER VALVE



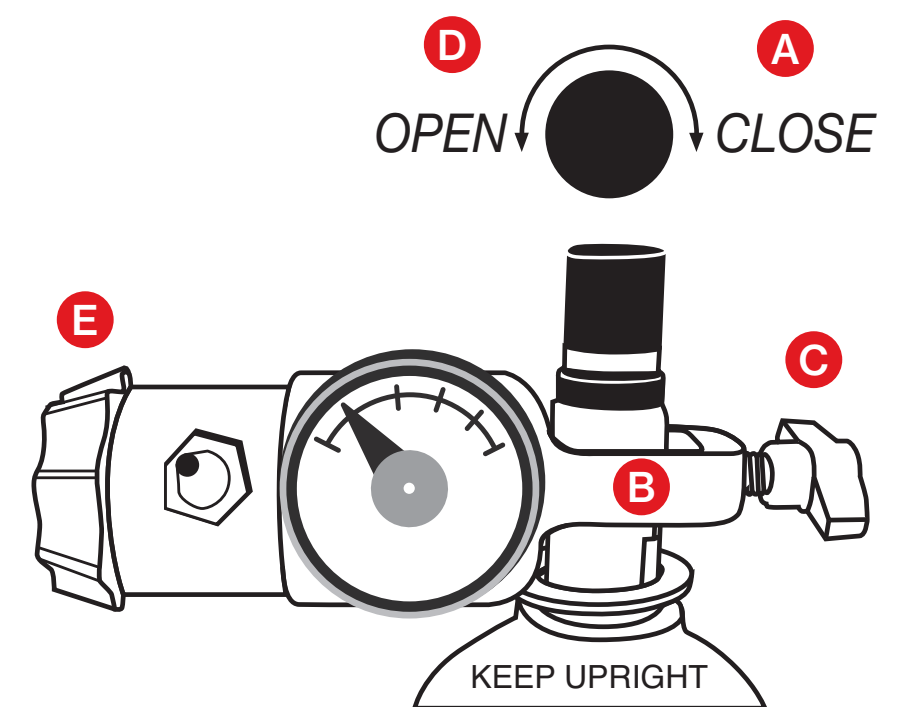
- Turn on valve **1** from position 0 to 1.
- Connect the medical oxygen tubing to the barbed outlet **3**.
- Adjust the flow selector knob **2** to the required flow rate.

WARNING
If flow selector knob is between two flow rate settings, the flow of medical oxygen is interrupted.

- After Use**
- Set the flow rate to 0 L/min **2**
 - Remove the medical oxygen tubing from the barbed outlet **3**
 - Turn the valve from position 1 to position 0 **1**

3 CONNECT/REMOVE REGULATOR OR OCD

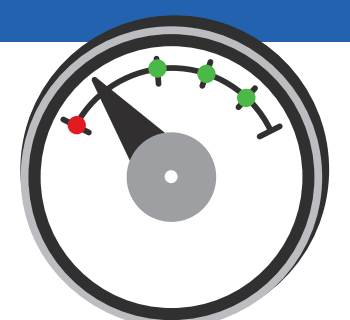
- To connect, ensure cylinder valve **A** is closed and regulator/OCD is in OFF position.
- Fit regulator/OCD **B** over cylinder valve with pins and holes aligned.
- Hand tighten regulator/OCD **C** to cylinder valve.
- Slowly open cylinder valve **D** until fully open.
- Set regulator/OCD to prescribed flow setting **E**.
- To remove regulator/OCD close cylinder valve **B** and wait till the regulator/OCD gauge reads zero. Turn regulator/OCD to the off position **E**, loosen the regulator/OCD **C** and remove from the cylinder valve.



4 CHECK FOR LEAKS

LEAKS

- If any leaks are heard then close the cylinder valve and remove the regulator/OCD. Repeat steps **B**, **C** and **D** in STEP 3.
- If the leaks persists, turn the cylinder off, mark it as **SUSPECT** and notify Air Liquide Healthcare.



NSW State Office
Level 4, Suite 4
247 Coward Street,
Mascot
NSW 2020

QLD State Office
759 Progress Road
Wacol
QLD 4076

SA State Office
95 Fullarton Road
Kent Town
SA 5067

VIC & TAS State Office
40 Bunnett Street
North Sunshine
VIC 3020

WA & NT State Office
51 Hampden Road
Nedlands
WA 6009



Tel: 1300 36 02 02 eFax: 1800 254 329